

NEWSLETTER - JUNE 2013

RECENTLY COMPLETED JOBS

Modification to 5th Wheeler Tow Hitch



Weather Proof Storage Box with Access Ladder and Landing



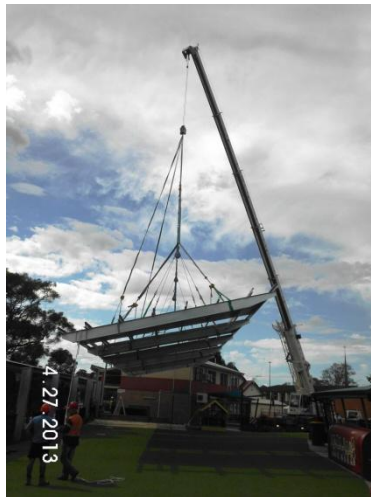
MARKET LEADER IN ENGINEERING
Through Strength, Innovation & Integrity

ST PETERS SCHOOL - AWNING

St Peters Prep School required a shaded and semi weather proof play area for the children to play.

Redbacks Engineering was able to design and deliver a practical solution - aesthetically matching existing structures with very limited access.

The project was completed with minimal disruption to school operations, well ahead of schedule, with sensitivity to the safety of children, staff and parents.



RECENTLY COMPLETED JOBS

Refurbishment to Semi Trailer



Contact Details

Office: 07 5495 2212
Fax: 07 5499 0995
Mobile: 0407 624 033

Email:
admin@r-b-e.com.au



Jobs In Progress:

- Kapunda Cattle Crate
- St Peters School Undercover Courts
- John Deere Tractors Belly Plates / Brush Bars / FOPS



Quality Assurance:

Redbacks Engineering has 'Third Party Certification' for the following standards:

- AS/NZS ISO 9001:2008 Quality Management
- AS/NZS 4801:2001 Safety Management
- AS/NZS ISO 14001:2004 Environmental Management

Visit our updated website:



Fun Fact:

'When China wakes, it will shake the world'

Take a look at this bridge...



It opened one year ago in the eastern Chinese port city of Qingdao.

It traces a wide arc across the Bay of Jiaozhou, linking the port to the island of Huangdao.

It's six lanes wide and 42.5km long — enough to sit 38 Sydney Harbour Bridges end-to-end with room to spare. It took 10,000 workers more than four years to build and cost over \$1.4 billion. It's a monumental feat of human engineering and construction.

Redbacks is Proud to be Associated with the following businesses:



www.1300locate.com.au



www.rhire.com.au



www.jpmmachinery.com.au



SHORELINE
BUSINESS GROUP PTY LTD

www.shorelinegroup.com.au